



Library services in a new perspective:
Reaching out...

LIBIS
INTO INFO
Jo Rademakers
Director LIBIS
KU LEUVEN



KU LEUVEN

- Comprehensive University
 - Including the Bachelor's campus in Kortrijk
- 3 groups, 15 Faculties:
 - Science, Engineering and Technology
 - Humanities and Social sciences
 - Biomedical sciences
- 41.334 Students (16% international; 2012)
- 5199 Peer reviewed publications (2010)
- 98 Spin-offs (2011)
- 68 [QS World UR 2011]
- 67 [THES 2012]

LIBIS
INTO INFO

Leuven Integrated (B)Library and Information System


- Part of K.U.Leuven responsible for central library automation
Governed by a management board
- Since early 70's
- Service offer for external organisations (> 120)
- 19 highly qualified persons
+ experts of library, archives, museums and ICT
- Partnership with Ex Libris

KU LEUVEN LIBISnet de Provincie Bib Lias Heron Unio

LIBIS
INTO INFO

K.U.Leuven libraries

- 11 Libraries
- > 4 M items
- Large e-resource collection (go e-only)
- Several repositories (research, AVM...)
- Integrated with
 - Archives
 - Museums
- Great team of librarians (approx. 170)
– new generation coming in
- Stagnating budgets (ahum...)



LEUVEN

LIBIS
INTO INFO

A Library network


- Different types of libraries:
 - Collections
 - Size
 - Personnel
 - Budget
 - Needs
 - Multilingual
- Collaboration !!!

LIBISnet

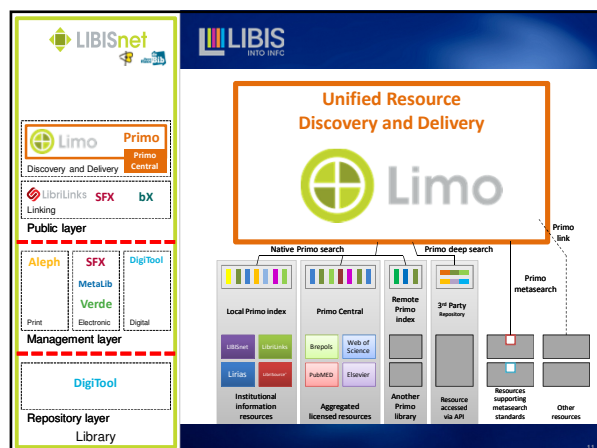
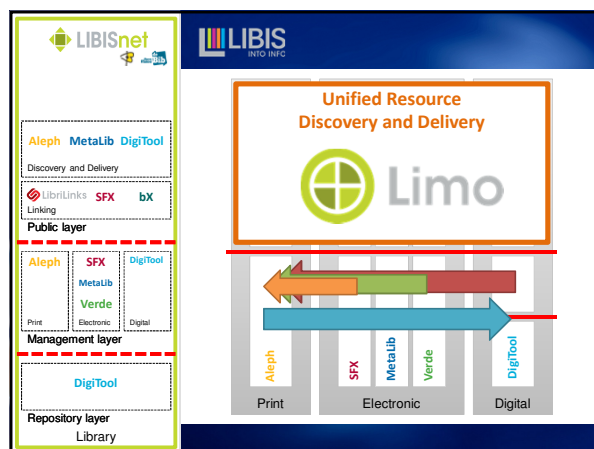
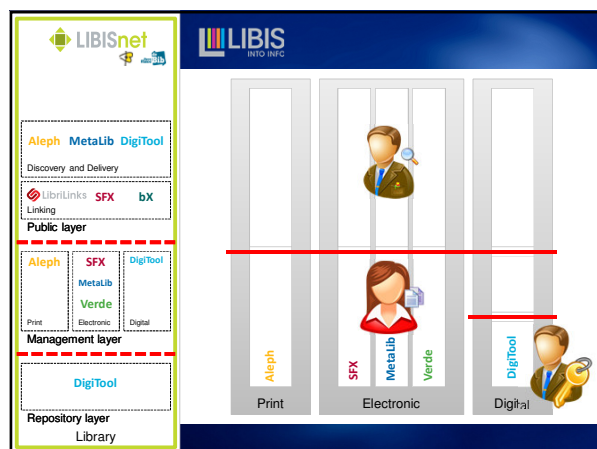
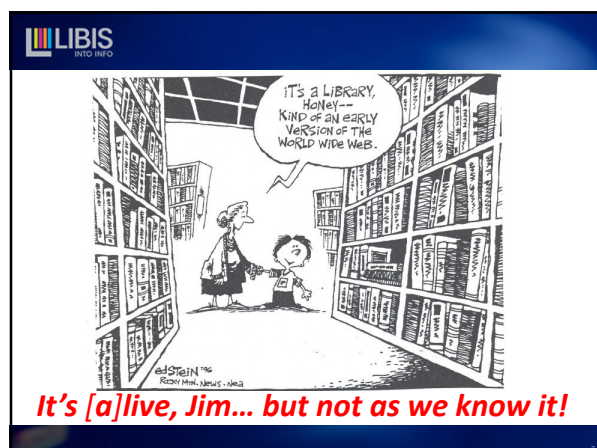
LIBIS
INTO INFO

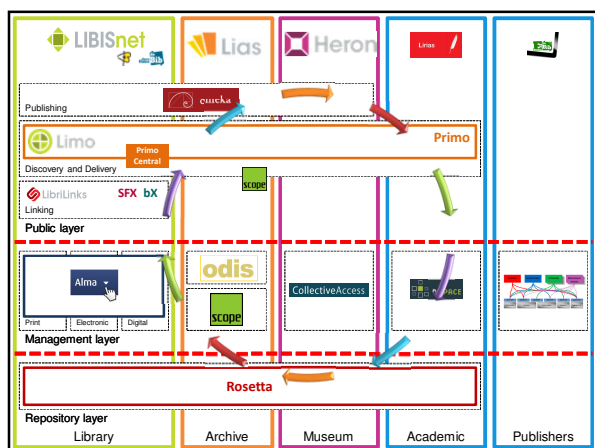
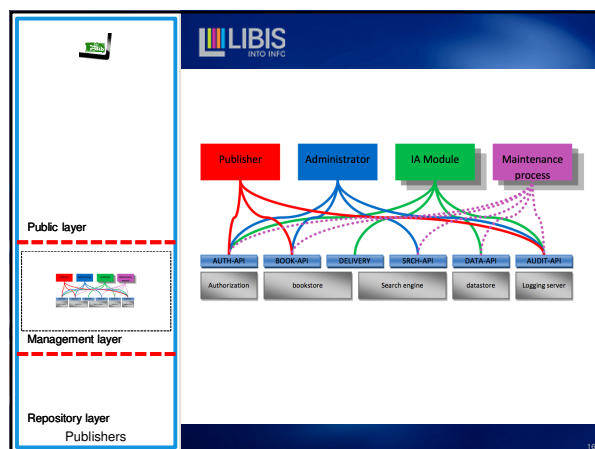
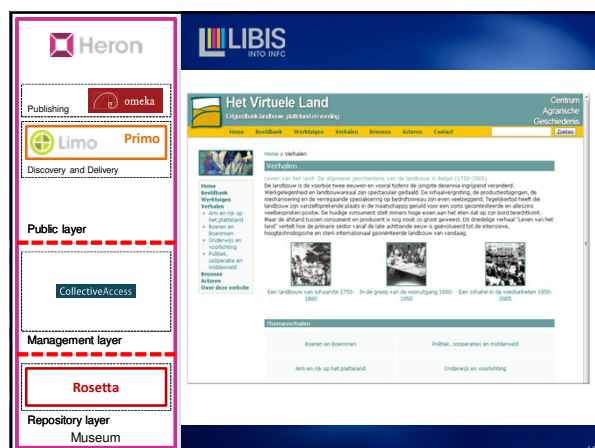
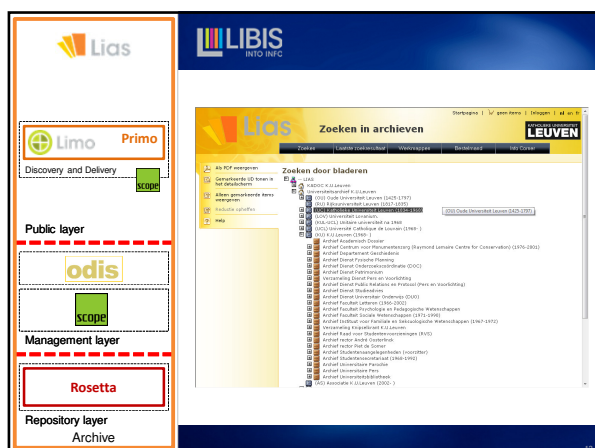
A service provider

- Serving over 120 libraries
- Complete service offer
 - Service Level Agreements
 - Customised services / reports
 - Also public libraries
- Total Cost of Ownership (TCO)



PROVINCIE
VLAAMS-BRABANT
de Provincie
Bib





LIAS

- Leuven Integrated Archiving System
- The objective of the project is the creation and exploitation of a digital repository and archival management system
- The desired system provides a permanent and safe storage of digital objects. The **authenticity, integrity, unicity** of the digital objects and the structure of these objects are guaranteed in this environment.
- The system also provides a fully integrated instrument for describing (Archival Management System AMS). The digital, paper or hybrid objects are described following the international standards for description, storage and preservation. All objects can be described and displayed in their context.

Lias

LIAS

- Not only archives but also other institutions such as libraries, educational institutions, museums... need a digital depot. Requirements are very similar but not equal.
- So: the digital depot must be able to act as a stand alone system but also open to be integrated in other systems
- Create networks of expertise

19

Lias

Partners

- 2006: LIAS (Leuven Integrated Archiving System) = consortium
 - University Administration
 - ICTS (Computing center)
 - LIBIS
 - University Library
 - University Archives
 - KADOC (Documentation and Research Center for Religion, Culture and Society)

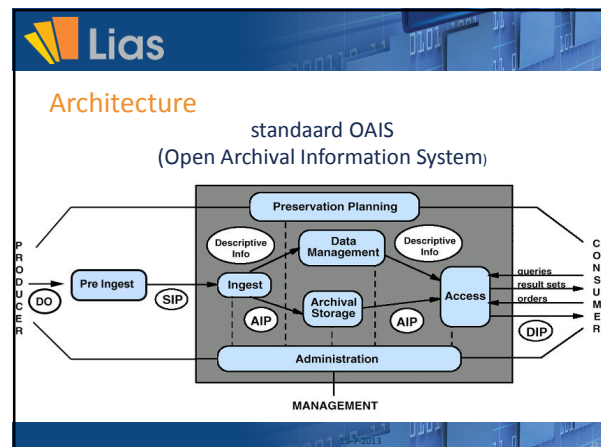
Lias

Digital preservation

Digital preservation can be understood as the series of managed activities necessary to ensure continued access to digital materials for as long as necessary, involving the planning, resource allocation, and application of preservation methods and to ensure that digital information of continuing value remains accessible and usable.

It combines policies, strategies and actions to ensure access to reformatted and born digital content regardless of the challenges of media failure and technological change. The goal of digital preservation is the accurate rendering of authenticated content over time.

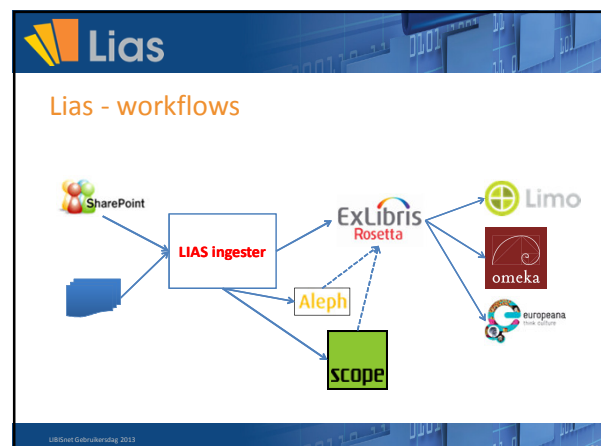
From Wikipedia, the free encyclopedia



Lias

Rosetta

- State of the art system
- Long-term preservation
- Supported by a large company
- Active community
- Customised interfaces
- Customised workflows
- Also DAM features
- Flexible API's...
- Consortium features



Lias

Ingest Agreement

- Validation
 - Viruscheck
 - Checksum
 - File format
 - Normalisation
- Ingest Validation
- Financial
 - Who is going to pay? Now and tomorrow!
- To do

Lias

Ingest workflow

- Preingest / ingest workflow for digital objects with metadata from other systems / tools
 - Metadata from Aleph
 - Metadata from scopeArchiv
 - Metadata from Sharepoint
 - Metadata from ...
 - XML-metadata
 - Mapping based on naming conventions
- Preingesttool for basic selection, sorting and description of digital objects via SharePoint

Lias

Archivformer → Archivaris → PREINGEST

1^{ste} verwerking met Windows Explorer

2^{de} verwerking met SharePoint

Lias

Lias ingester

- Automated ingest flow
- Highly configurable
- 6 modules (stages) each with a number of tasks
- 1 'run' with common configuration options, can have multiple 'configurations' with specific tasks and options
 - Modules:
 - Collector
 - DirCollector – grab files from disk location
 - SharePointCollector – grab files from SharePoint site
 - FtpCollector – grab files from FTP server
 - HttpCollector – grab files from a Web server
 - ZipCollector – grab files from a compressed archive

Lias

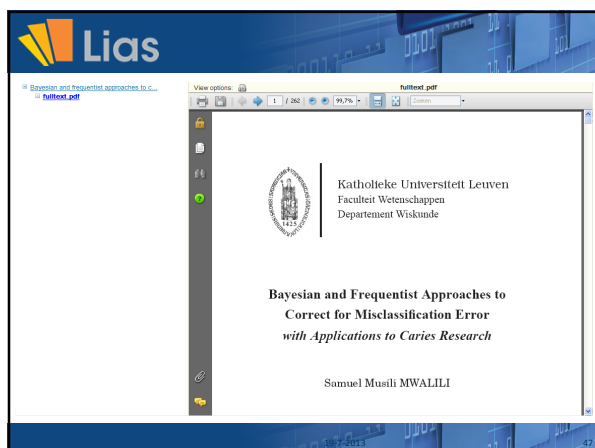
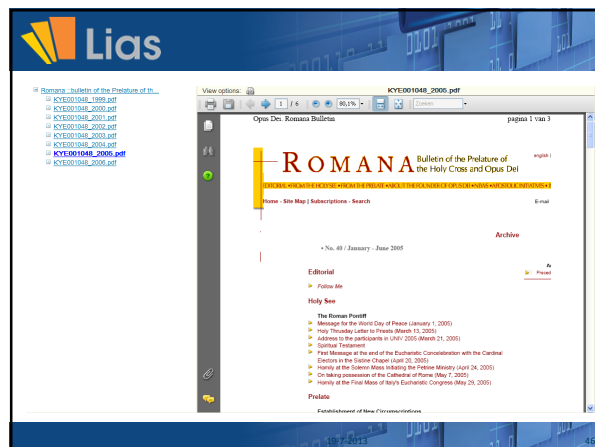
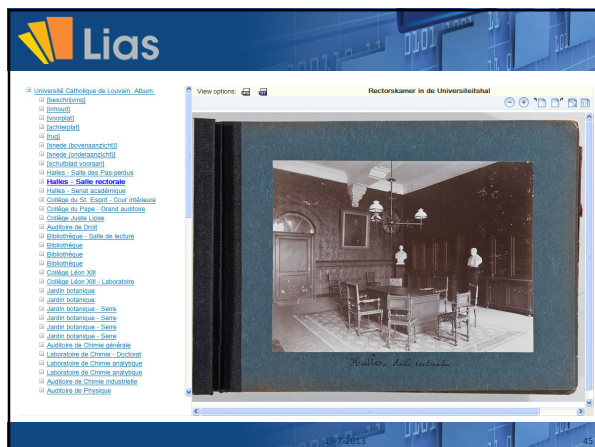
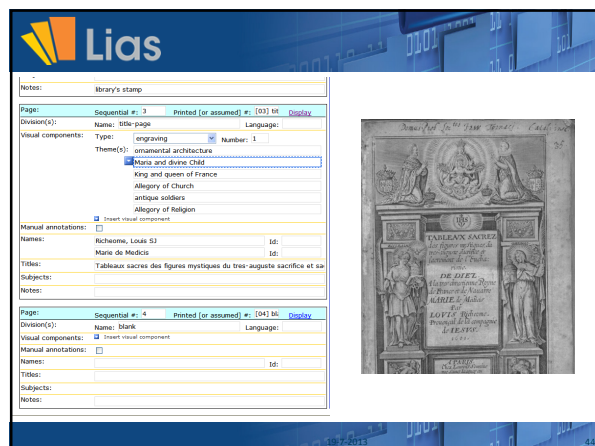
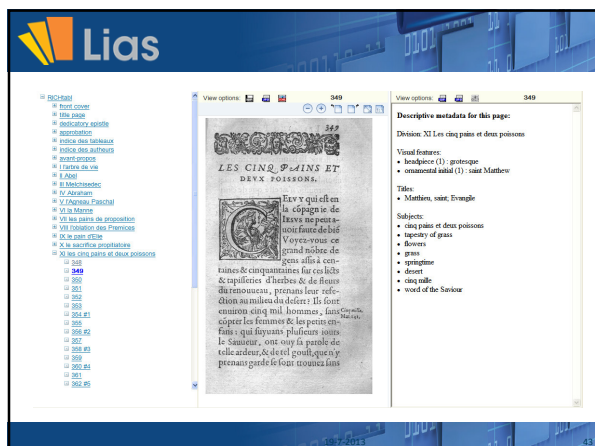
Lias ingester

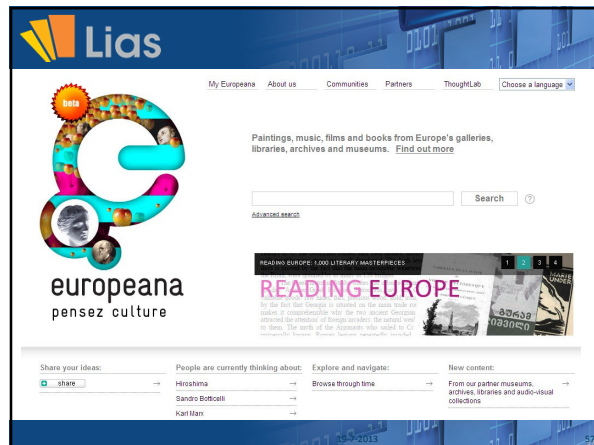
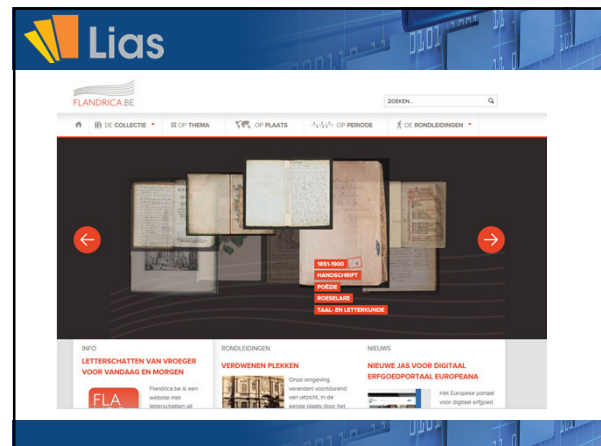
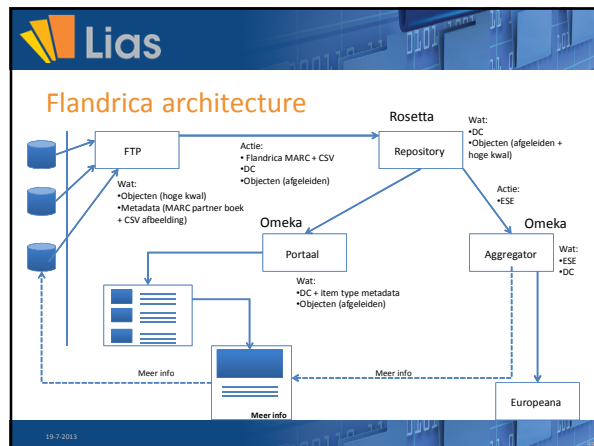
- Preprocessor
 - FileMatcher - filter objects based on file name and/or path
 - MimeTypeFilter - filter objects based on MIME type
 - LocationChecker – check if object can be accessed/read/....
 - VirusScan – scan for viruses
 - FixityChecker – verify supplied checksum
 - IngestedChecker – check if object already ingested
 - MetsComposer – combine matching objects and hierarchy into a METS object
 - ComplexComposer – combine matching objects into a COMPLEX object
 - XmlComposer – combine matching objects and hierarchy into a XML object

Lias

Lias ingester

- Preingester
 - IngestSetup – sets up Ingest work area and configuration
 - ControlFields – adds control field information to each object
 - MetadataCollector – collect metadata info from Aleph / disk / Collective Access / ...
 - CopyStream – adds original stream to the object
 - CreateManifestations – adds manifestations to each object according to the IngestModel
- Ingestor
 - Launches the ingest procedure and checks the output and grabs the assigned PIDs of the ingested objects

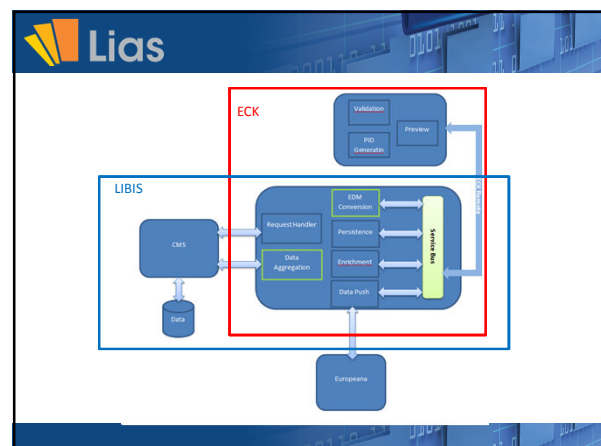




Lias

Europeana inside

- Best practice research project (ICT-PSP)
- Simplify delivery of data to Europeana:
 - The EU-funded network that is working to transform the ability of European cultural heritage institutions (museums, archives and libraries) to participate in the Europeana platform
- Until april 2014
- 26 partners



Lias

Long term preservation

- Keep digital objects accessible and readable in the future
- More than just backup
 - Accessible
 - Readable
 - Usable
- => need to transform objects, metadata and documentation
- => Rosetta

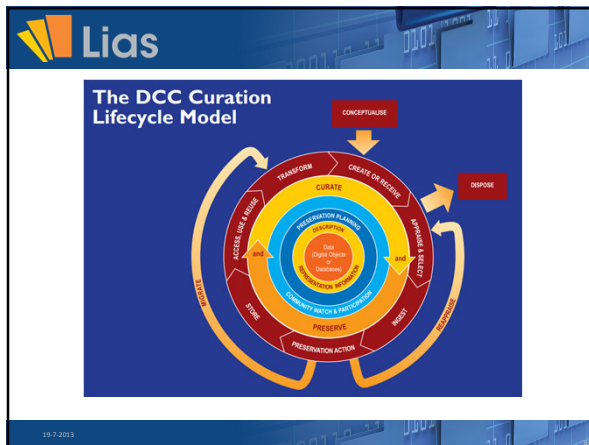
19-7-2013

Lias

Preservation planning

- Risk analysis based on file formats (PRONOM)
- Preservation test :
 - Test of possible preservation actions
 - Analysis of the results (report)
- Preservation actions :
 - Execution & feedback
 - Registration of all executed actions
 - Possibility to re-use

19-7-2013 62



Lias

Storage

- Different options
 - Mirrored NAS (RAID-5) (NetApp)
 - Single NAS (RAID-5)
 - TSM Backup
 - Remote storage
 - Cloud services

Rosetta Advisory Group

Lias


Functional Support

- Complete Management
- Migration services
 - Configuration
 - Training
- Manuals
- Incident management
- Helpdesk (24/7)
- Project management
- >> Service Level Agreement

Lias

Central Infrastructure

- Redundant
- 99,8 % availability
- 24/7/365 monitoring
- Service slots
- Service packs
- >> Service Level Agreement




Networking

- Working groups
 - Exchange best practices and experiences with colleagues
- Advisory Board
- LIBISnet User Group Meeting
- Igelu, Vlengel, Rosetta Advisory Board
 - Influence future developments through partnerships
- Regional, national and international projects, ...
- Account management




The team

- 19 persons with a large expertise in library and archive (...) automation (> 250 years)
 - Business consultants
 - Analyst-developers
 - Infrastructure architect
 - Project managers
 - Account managers
- Experts in specific domains and modules
 - + experts from the libraries and ICT
- Like to hire some more...



Financial

- Licenses & software
 - Negotiate yourself vs have it done by experts
 - Own contract vs central contract
 - Configure, upgrade, update yourself vs have it done by a knowledgeable centralized team
- Hardware
 - Buy and maintain infrastructure yourself vs contribute to central infrastructure
- Cataloguing
 - Catalogue all records yourself vs just add your information
- Staff
 - Have IT-staff and system managers vs contribute to a central staff



Pricing

- One-time fee
 - Including configuration, training, migration...
- Annual cost
 - Fixed cost based on the size of the project / organisation
 - Including licenses, maintenance, support, management...
 - Variable cost based on Tb
 - Packages of 100 GB



Thank you !
Questions ?



Jo Rademakers
LIBIS @ KU Leuven
jo.rademakers@libis.be – www.libis.be
+32 (0) 16 32 22 66
De Croylaan 54 – PB 5592 – B-3001 Heverlee



LIBIS
INTO INFO
Information.
Innovation.
Inspiration.